

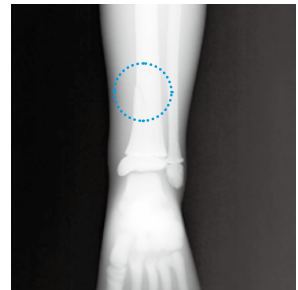
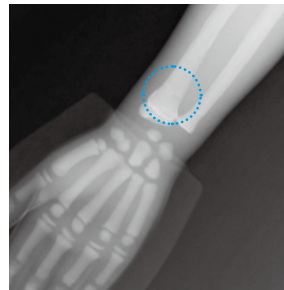
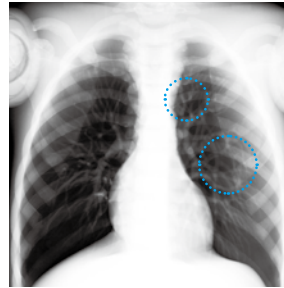
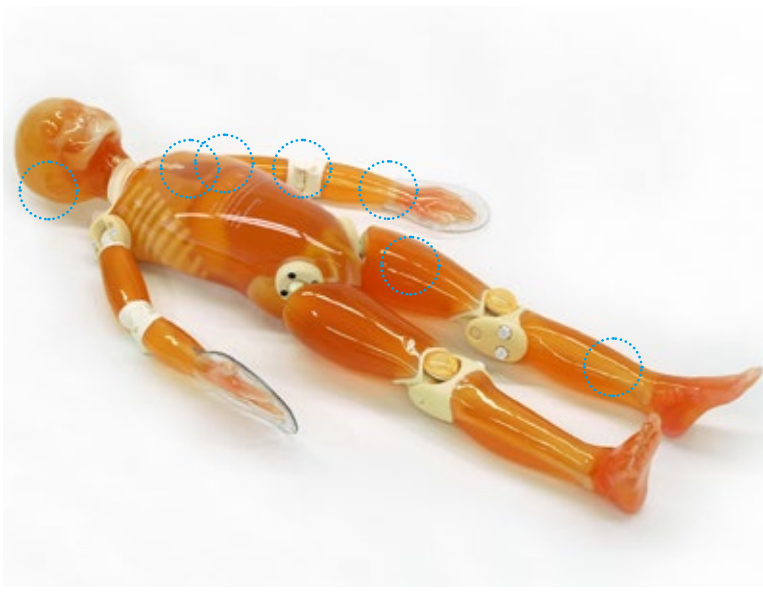
PH-2D | 41350-500

# Bone Fracture Pediatric Phantom "PBU-70B"



ANTHROPOMORPHIC PHANTOMS

**Improve your skills in detecting bone fractures in children**  
**Noticing the signs of an abusive fracture of a child is the first step to putting an end to maltreatments**



## FEATURES

- | Training in pediatric radiography can be enriched with clear and subtle bone fractures
- | Typical fractures resulting from child abuse are also included
- | Radiology absorption and HU number approximate to human body
- | Main joints have close-to human articulation
- | Phantom can be disassembled into 10 individual parts

## APPLICATIONS

- | Plain X-ray
- | CT
- | Basic patient positioning
- | Radiographic interpretation

## CONCEPT and ANATOMY - Is there sign of abuse?

### Child maltreatment

Children around the world are victims to domestic violence and abuse, yet the problem is often overlooked. Noticing the signs of an abusive fracture of a child is the first step to putting an end to these maltreatments.

This phantom has been designed and developed to cultivate such observation skills in future radiologists and radiographers.

<b>Signs of callus</b>	A number of callus examples can be a result of abusive treatment. This particular model contains calluses in the wound healing phase 5.
<b>Supracondylar humerus fracture</b>	A supracondylar humerus fracture on the distal humerus above the epicondyles and is a fracture commonly observed in children, accounting for approximately 20%.
<b>Spiral fracture</b>	Certain causes of non-accidental pediatric injuries, such as spiral fractures, include maltreatment stimulated by anger or distress.
<b>Back, scapula and rib fractures</b>	Rib fractures close to the vertebrae may be potential indicators of the child being thrown.
<b>Skull fractures</b>	A linear skull fracture may be another indication of child maltreatment. At times, fractures display better on x-ray scans than CT imaging.

## DESCRIPTIONS

### SET INCLUDES

- 1 pediatric whole body phantom
- 1 head supporter
- 1 hand fixture belt
- 1 screwdriver
- 1 set of sample X-ray data (DVD)
- 1 manual

### SPECIFICATIONS

Phantom height: 110 cm / 43.3 in  
 Phantom weight: 20 kg / 44 lb  
 Packing size: W86 x D60 x H32 cm / W33.8 x D23.6 x H12.6 in

### MATERIALS

Soft tissue: urethane based resin (specific gravity: 1.06)  
 Synthetic bone: epoxy resin (specific gravity: 1.31)  
 \*Phantom has no metal parts or liquid structure

### OPTIONAL PARTS

41363-080 storage case for PH-2C/ 2D

